



VITEX THERM

Thermal Insulation System

PRODUCT GUIDE



Shield

Effective and long lasting building protection

Energy Saving

Significant cost reduction for heating and cooling

Aesthetics

High quality final result by selecting among thousands of color shades

Easy Application

Quick and integrated service of project needs with one crew



CONTENTS

06-07

Certifications
Education
Guarantee

08-11

External Thermal
Insulation Composite
System (ETICS)

VitexTherm Application Steps

12

Anti-Crack
Protection
System

14-31

Materials

Substrate preparation

Bonding of insulating materials

Insulating materials

Mechanical fixing of insulating panels

Anti-crack layer

Coatings / Plasters

Special pieces / Accessories

Tools

Suspension parts for light and heavy weights

32-35

Indicative
VitexTherm
Solutions

36-39

VitexTherm
Projects

40

Contact
details



EPD®

ENVIRONMENTAL PRODUCT DECLARATION

ECO-EPD

Environmental
Product Declaration

ETICS

Certified External
Thermal Insulation System
according to EAD 040083-00-0404

Life Cycle

It have been assessed for the environmental
impact, in accordance with international
standards EN 15804 & ISO 14025.

Environmental FOOTPRINT

The most
comprehensive
approach to capturing
product impacts on
the environment

The ECO Environmental
Declaration of Vitextherm
System, is listed in the
database of International EPD®
System and the European
ECO PORTAL confirming the
accuracy and reliability of the
assessment results

HOLISTIC Assessment





Training and continuous support

VitexTherm technical seminars train application crews on VitexTherm products and the techniques and stages required from the beginning to the end of the project. The training is on-going with seminars on application, informational workshops throughout Greece, and the awarding of the **'Certificate of Attendance at VitexTherm Seminars'**.



10-year guarantee

The **VitexTherm** exterior insulation system comes with a **10-year guarantee** for the materials and installation of the system if it is carried out by a certified partner and the application is checked by the company's technical department*.



* For more information concerning the guarantee, please contact our company.

Partner Certification VITEXTHERM EXPERT

Crews using **VitexTherm** receive a **'Certified VitexTherm Crew'** certificate after:

- Attending VitexTherm seminars.
- The proper installation of material in a project they have undertaken, according to the specifications of the company, following a check by our technical department.



System Certifications

As building materials, the **VitexTherm External Thermal Insulation Composite Systems** have the **CE** mark as it has received **European Technical Approval ETA 15/0148** for VitexTherm (insulating material EPS) and **ETA 19/0180** for **VitexTherm** (insulating material mineral wool) certification for the production process (**FPC**) **Certificate No 2884-CPR-00064**- assessed to be in compliance with its applicable requirements **EAD 040083-00-0404**. In conclusion, the application of **VitexTherm** exterior thermal insulation systems ensure that the materials have been tried and tested and that the final result will remain unchanged through time for **at least 25 years**. **Granikot Fire Resistant** topcoat is certified for non-combustibility - **Fire reaction Class A2-s1, d0**.



EXTERNAL THERMAL INSULATION COMPOSITE SYSTEM

FOR OLD AND NEW BUILDINGS

Designed to meet the most modern standards

Vitex has created VitexTherm, a certified External Thermal Insulation Composite System (ETICS) which can be used on both old and new buildings. VitexTherm is a modern system for external thermal insulation and is the best choice for a quality result and construction durability. Designed to meet the most modern standards and tailored to the needs of the final consumer.

It provides:



Great energy savings of up to 60%. Elimination of thermal bridges. **Quick return on investment in 3-6 years.**



Reduction in maintenance costs.

EXPANDED POLYSTERENE



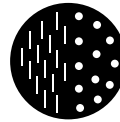
Granikot Acrylic or Granikot Linea or Granikot Silicone or Granikot Fire Resistant Top Coat Plaster
Colored top coats of acrylic or silicone based highly resistant to weather changes and to mechanical stresses



EXTERNAL THERMAL INSULATION COMPOSITE SYSTEM FOR OLD AND NEW BUILDINGS



Full protection and regeneration of surfaces.



A wide range of grain sizes in the top coat, which do not crack.



Prevention of vapor condensation in the interior.



Thousands of shades!

The primer and top coat can be colored through **Vitex Coloring System** in thousands of shades.

MINERAL WOOL



Granikot Acrylic or Granikot Linea or Granikot Silicone or Granikot Fire Resistant Top Coat Plaster

Colored top coats of acrylic or silicone based highly resistant to weather changes and to mechanical stresses



VITEX THERM APPLICATION STEPS

1

Preparing the substrate.



With **Superbond Primer**
or with **Granikot Primer**



2

High
water-proofing
zone and
placement of
the **metal lath**.



3

Bonding **thermal insulation panels**
with **GNK 10G** or **GNK 10G Easy** mortar
or **GNK polyurethane foam**.



7



Placement of
dripnose bead on
lintels over doors
and windows.



8



Placement of
corner beads on
exterior corners.



9



Placement
of **diagonal
mesh**.



VITEX THERM APPLICATION STEPS

4



Filling gaps with **GNK Foam**.



5



Mechanical fastening with:

- plastic **PL**
- screws **Thread**
- metal **MT**
- plastics **WK-LTX**



6



Placement of **polystyrene or mineral wool caps**.



10

Anti-cracking layer with **GNK 20W** or **GNK 20W Easy** fiberglass-reinforced mortar or **GNK Elastic** with organic materials and **VitexTherm glass fiber mesh 160 gr/m²**.



11



Application of **Granikot Primer**. Can be colored in thousands of shades through **Vitex Coloring System**.



Thousands of shades!



12

Application of **Granikot** plaster. Can be colored in thousands of shades through **Vitex Coloring System**.

Thousands of shades!



160 HD shades!



ANTI-CRACK PROTECTION SYSTEM

FOR OLD BUILDINGS WHICH REQUIRE REPAIRS

Hairline cracks in wall plaster **create problems on the facade of the building** and **reduce its ability to protect** against humidity and extreme weather conditions. This phenomenon is caused either by extreme expansion/contraction or because of a lack of continuity between the various construction layers (e.g. the bonding of the masonry with the concrete). The **Anti-Crack Protection System** is the perfect solution for existing houses, hotels and industrial sites. It permanently protects and improves the appearance of external surfaces, with the best value for money ratio.

The problem:

- ✓ **Hairline cracks** in plaster
- ✓ **Humidity penetrates the facade**
- ✓ **Constant repairs** of surfaces with no improvement

The final result provides:



Complete **reinforcement** and **regeneration** of surfaces.



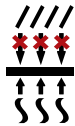
Perfect appearance



Permanent solution with no need for maintenance and repainting.



Wide range of Grain Size.

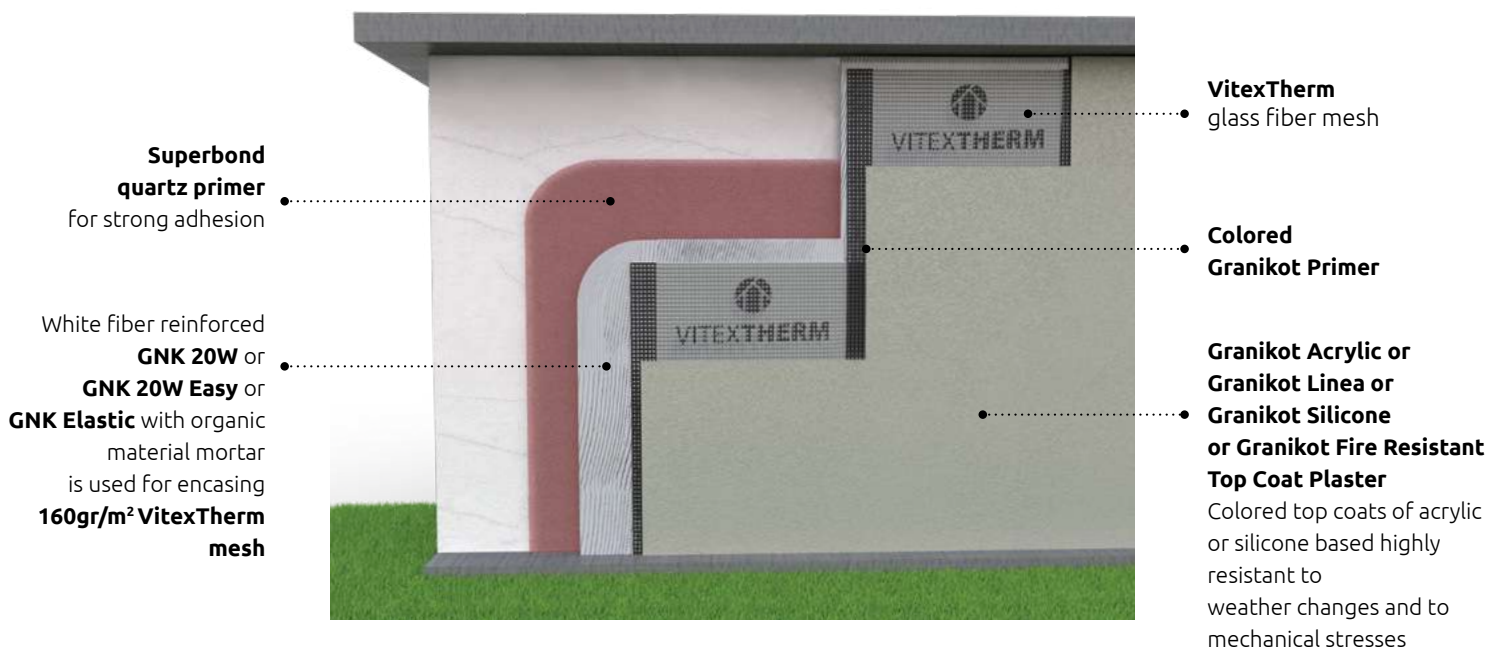


Great transpiration and flexibility.



Thousands of shades!

The primer and mortar can be colored in thousands of shades through **Vitex Coloring System.**



Meet our **new products**

GNK EASY, GRANIKOT LINEA



GRANIKOT LINEA

Acrylic plaster facade, weather-resistant and with great adhesiveness, firmness and elasticity

GNK 20W EASY

Fiber reinforced, coarse-grained white cementitious plaster, for a uniform anti-crack surface

GNK 10G EASY

Cement based, polymer modified coarse-grained adhesive for insulation boards

SUBSTRATE PREPARATION



SUPERBOND PRIMER

Strong adhesion quartz primer for smooth and low absorption surfaces.

Packaging

Spreading rate

750 mL

3 L

10 L

8 - 12 m² / L
subject to coat thickness



VITEXTHERM VT-10

Cement-based single component ready-to-use industrial mortar. Applied on the high waterproofing zone. Used in combination with **VT-20** acrylic resin for high sealing properties and flexibility.

Packaging

Spreading rate

25 kg

2,5 - 3,0 kg / m²
for 2 mm coat thickness



VITEXTHERM VT-20

Emulsion admixture for VT-10 sealing mortar at 1:5 ratio. Provides improved workability and simultaneously increases mechanical and chemical properties.

Packaging

Spreading rate

5 kg

5 kg / 25 kg
mortar
VITEXTHERM VT-10

METAL LATH

Aluminum metal lath for **VitexTherm** external thermal insulation system levelling.



Width	Packaging	Sale Unit
5 cm		
6 cm	20 pcs X 2,5 m	pcs (2,5 m)
7 cm		
8 cm		

STARTUP GUIDE FIXING PLUG

Impact plug (8 X 60mm) for metal lath. Used on brick, concrete and other solid or perforated building materials.



Packaging
100 pcs

STARTUP GUIDE SPACERS

Plastic profiles for filling gaps between the substrate and the metal lath for masonry levelling. Can be located by simple clipping on the plug; individual parts may be combined to generate increased thickness.



Thickness	Packaging
3 mm	
5 mm	100 pcs
10 mm	



GNK 10G

Fiber reinforced cement based mortar for bonding insulating polystyrene panels on facades of buildings. **CE in accordance with EN 998-1.**

Packaging	Consumption
25 kg	3 - 5 kg / m²



GNK 10G EASY

Fiber reinforced cement based, polymer modified coarse-grained adhesive for insulation boards on the outer surfaces of buildings. **CE in accordance with EN 998-1.**

Packaging	Consumption
25 kg	3 - 5 kg / m²



GNK FOAM

Polyurethane adhesive foam for bonding polystyrene insulating panels on facades of buildings.

Packaging	Spreading rate
750 mL	6 - 8 m²

HD HIGH DURABILITY AND A WIDE RANGE OF GRAIN SIZES



Enhanced durability shades for exterior use:

- ✓ Enhanced resistance to intense sunlight and extreme weather conditions
- ✓ Unchanged facades over time
- ✓ High precision & accuracy in shades creation and repeatability



VITEXTHERM EPS 80 WHITE

Expanded polystyrene panel, **CE in accordance with EN 13163**, suitable for external thermal insulation.



Panel dimensions	Thermal conductivity λ (W/mk)	m ² /package	Panel thickness
100 X 60 cm	0,036	15	2 cm
		9,6	3 cm
		7,2	4 cm
		6	5 cm
		4,8	6 cm
		4,2	7 cm
		3,6	8 cm
3	10 cm		

VITEXTHERM EPS 100 WHITE

Expanded polystyrene panel, **CE in accordance with EN 13163**, suitable for external thermal insulation.



Panel dimensions	Thermal conductivity λ (W/mk)	m ² /package	Panel thickness
100 X 60 cm	0,034	15	2 cm
		9,6	3 cm
		7,2	4 cm
		6	5 cm
		4,8	6 cm
		4,2	7 cm
		3,6	8 cm
3	10 cm		

VITEXTHERM EPS 200 WHITE

Expanded polystyrene panel, **CE in accordance with EN 13163**, suitable for external thermal insulation. Mainly applied as high strength zone.



Panel dimensions	Thermal conductivity λ (W/mk)	m ² /package	Panel thickness
100 X 60 cm	0,033	15	2 cm
		9,6	3 cm
		6	5 cm
		4,8	6 cm
		4,2	7 cm
		3,6	8 cm
		3	10 cm

VITEXTHERM EPS 80 GRAPHITE PLUS

Graphite-based expanded polystyrene panel, **CE in accordance with EN 13163**, suitable for external thermal insulation.



Panel dimensions	Thermal conductivity λ (W/mk)	m ² /package	Panel thickness
100 X 60 cm	0,030	15	2 cm
		9,6	3 cm
		7,2	4 cm
		6	5 cm
		4,8	6 cm
		4,2	7 cm
		3,6	8 cm
		3	10 cm

VITEXTHERM EPS 100 GRAPHITE PLUS

Graphite-based expanded polystyrene panel, **CE in accordance with EN 13163**, suitable for external thermal insulation.



Panel dimensions	Thermal conductivity λ (W/mk)	m ² /package	Panel thickness
100 X 60 cm	0,030	15	2 cm
		9,6	3 cm
		7,2	4 cm
		6	5 cm
		4,8	6 cm
		4,2	7 cm
		3,6	8 cm
		3	10 cm

VITEXTHERM MINERAL WOOL

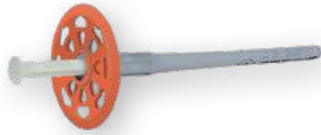
Exterior thermal insulation mineral wool. The material is non-combustible and offers excellent thermal and acoustic insulation. Fire reaction **Class A1** as per **EN 13501-1**.



Panel dimensions	Thermal conductivity λ (W/mk)	m ² /package	Panel thickness
100 X 60 cm	0,035	4,8	3 cm
		4,2	4 cm
		3,6	5 cm
		3	6 cm
		2,4	7 cm
		1,8	8 cm
		1,8	10 cm



MECHANICAL FIXING OF INSULATING PANELS



VITEX THERM PL

Impact driven plastic anchor for brick, concrete and other solid and perforated building materials with reinforced plastic pin for surface mounting of the insulating material. **EAD 330196-01-0604** certified. Screw diameter: 8mm, washer diameter: 60mm, Minimum anchoring depth: 35mm.

Product name	Packaging
VITEX THERM PL 110	
VITEX THERM PL 130	
VITEX THERM PL 150	100 pcs
VITEX THERM PL 170	
VITEX THERM PL 190	



WK-LTX

Impact driven plug for brick, concrete and other solid & perforated building materials with reinforced plastic pin for surface mounting of the thermal insulation material. **Certified as per ETAG 014**. Screw diameter: 8mm. Washer diameter: 60mm. Minimum anchor depth: 35mm.

Product name	Packaging
WK-LTX 095	
WK-LTX 115	
WK-LTX 135	200 pcs
WK-LTX 155	
WK-LTX 175	



VITEX THERM MT

Impact driven metallic anchor for brick, concrete and other solid and perforated building materials with reinforced plastic pin for surface mounting of the insulating material. **ETAG 014 certified**. Screw diameter: 8mm, washer diameter: 60mm, Minimum anchoring depth: 25mm.

Product name	Packaging
VITEX THERM MT 095	
VITEX THERM MT 115	
VITEX THERM MT 135	100 pcs
VITEX THERM MT 155	



VITEX THERM THREAD

Threaded anchor with galvanized screw for surface mounting of the insulating material. **ETAG 014 certified**. Applications: Wood, OSB, fiber board or cement board. Washer diameter: 60mm, Minimum anchoring depth: 25mm.

Product name	Packaging
VITEX THERM THREAD 080	
VITEX THERM THREAD 100	100 pcs



Warehouse
Management System



Investment in production of
ready made plaster 33 tons/day



Investment plan
€ 5.0 million.



VitexTherm logistics center
3.150 m²



Energy consumption
from 100% RES



Total area
4.500 m²

New production facility

📍 Agia Paraskeui, Aspropirgos



TAKE A VIRTUAL TOUR OF THE NEW VITEXTHERM READY-MADE
PLASTER PRODUCTION FACILITY



GNK 20W

Fiber reinforced white cement-based mortar. **CE in accordance with EN 998-1.** Combined with glass fiber mesh, used for covering insulation panels of expanded polystyrene.

Packaging	Consumption
25 Kg	3 - 4,5 Kg / m²



GNK 20W EASY

Fiber reinforced, coarse-grained white cementitious plaster. In combination with fiberglass mesh, is used for covering the white or graphite expanded polystyrene insulation boards or insulation boards from mineral wool. **CE in accordance with EN 998-1.**

Packaging	Consumption
25 Kg	3 - 4,5 Kg / m²



VITEX THERM GLASS FIBER MESH

Alkali resistant glass fiber mesh 160 gr/m² to reinforce the fiber reinforced mortar. **EAD 040083-00-0404** certified.

Roll	Consumption	Roll dimensions (m)
50 m²	1,1 m²/m²	1 m X 50 m



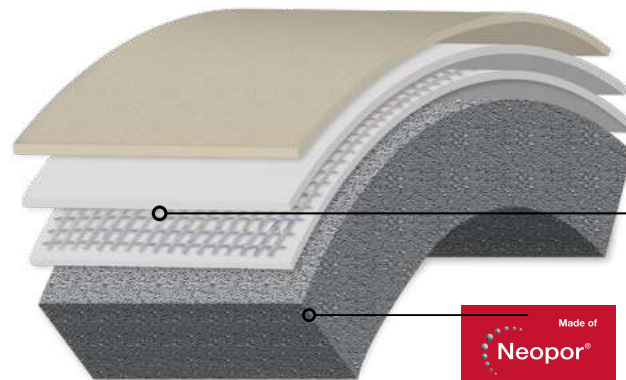
GNK ELASTIC

Ready-to-use fiber-reinforced white paste resin coating/glue. In combination with VITEX THERM fiberglass mesh, it is used to cover thermal insulation panels with expanded or extruded polystyrene, also for use with inorganic fiber (mineral wool) panels. Offers high elasticity. Suitable for bonding polystyrene thermal insulation panels on outer facades of buildings.
CE certified as per EN 15824.

Packaging	Consumption
15 kg	2 - 4 Kg / m ²

The organic system of external thermal insulation system with fiber reinforced acrylic paste **GNK ELASTIC, offers significant advantages:**

- Flexibility
- High mechanical strength
- Easy to use



GRANIKOT ACRYLIC

High quality acrylic plaster, ideal for building facades, weather resistant, with excellent protective properties against UV radiation. Highly solid with excellent adhesion and elasticity. Can be colored through **Vitex Coloring System. CE in accordance with EN 15824.**

Product name	Packaging	Granulation (mm)	Consumption (kg/m ²)
Granikot Acrylic Flat	5 kg	1,0	1,7 - 2,2
		1,2	1,8 - 2,3
		1,5	2,0 - 2,5
	25 kg	0,8	1,4 - 1,9
		1,0	1,7 - 2,2
		1,2	1,8 - 2,3
		1,5	2,0 - 2,5
		1,5	1,8 - 2,2
		2,0	2,3 - 2,7
Granikot Acrylic Grafiato	5 kg	2,5	2,8 - 3,2
		1,5	1,8 - 2,2
		2,0	2,3 - 2,7
	25 kg	2,0	2,3 - 2,7
		2,5	2,8 - 3,2

GRANIKOT SILICONE

High quality silicon-based plaster with water repellent properties, resistant to weather conditions, water repellent with high transpiration to water vapour. Therefore, it protects surfaces against mould and fungi. It is highly resistant to UV radiation and temperature. Ideal for areas with high humidity and environmental pollution. Can be colored through **Vitex Coloring System. CE in accordance with EN 15824.**

Product name	Packaging	Granulation (mm)	Consumption (kg/m ²)
Granikot Silicone Flat	5 kg	1,0	1,7 - 2,2
		1,2	1,8 - 2,3
		1,5	2,0 - 2,5
	25 kg	0,8	1,4 - 1,9
		1,0	1,7 - 2,2
		1,2	1,8 - 2,3
		1,5	2,0 - 2,5
		1,5	1,8 - 2,2
		2,0	2,3 - 2,7
Granikot Silicone Grafiato	25 kg	2,0	2,3 - 2,7
		2,5	2,8 - 3,2



Thousands of shades!



Thousands of shades!





Thousands of shades!



GRANIKOT FIRE RESISTANT

High quality acrylic non-flammable plaster, with certified fire reaction **Class A2-S1, D0**. Ideal for building facades, resistant to extreme conditions with excellent protective properties against UV radiation. **CE certified as per EN 15824**. It is highly compressed, has excellent adhesion and elasticity. Can be colored through **Vitex Coloring System**.

Product name	Packaging	Granulation (mm)	Consumption (kg/m ²)
Granikot Fire Resistant	25 kg	1,0	1,7 - 2,2
		1,5	2,0 - 2,5



Thousands of shades!



GRANIKOT PRIMER

White acrylic textured primer, ideal for interior and exterior surfaces from plaster, cement and surfaces painted with water-based paints (plastic, acrylic etc). It improves the appearance, coverage, adhesion and resistance of **Granikot Acrylic** and **Silicone** plaster on smooth and uneven surfaces. Can be colored through **Vitex Coloring System**.

Packaging	Consumption
3 L	100 - 120 mL / m ²
10 L	



HD shades!

Shades excluded:
0081, 0508, 0704,
0143, 0514, 1019,
0381, 0535, 1061,
0424, 0556, 1095

NEW



GRANIKOT LINEA

Very good quality acrylic plaster facade, weather-resistant and with great UV radiation properties. It has great adhesiveness, firmness and elasticity. Can be colored through **Vitex Coloring System**, in selected HD shades of Global Exterior Fan deck. **Certified with the CE marking according to EN 15824**.

Product name	Packaging	Granulation (mm)	Consumption (kg/m ²)
Granikot Linea Flat	5 kg	1,0	1,7 - 2,2
		1,2	1,8 - 2,3
		1,5	2,0 - 2,5
	25 kg	1,0	1,7 - 2,2
		1,2	1,8 - 2,3
		1,5	2,0 - 2,5



PVC CORNER BEAD WITH MESH

PVC corner bead with adhesive alkali resistant glass fiber mesh to protect edges in the **VitexTherm** External Thermal Insulation Composite System.

Dimensions	Packaging	Sales unit
10 cm X 15 cm X 2,5 m	Package (50 pcs X 2,5 m)	pcs (2,5m)



DRIPNOSE BEAD PVC

PVC profile with adhesive alkali resistant glass fiber mesh for formation of dripnose when transiting from vertical to horizontal surfaces, in the **VitexTherm** External Thermal Insulation Composite System.

Dimensions	Packaging	Sales unit
10 cm X 10 cm X 2,5 m	Package (20 pcs. X 2,5 m)	pcs (2,5m)



FLEXIBLE PVC CORNER BEAD

Variable angle PVC corner bead with adhesive alkali resistant glass fiber mesh to protect non vertical edges (90°) in the **VitexTherm** External Thermal Insulation Composite System

Packaging
Roll (25 m)



EXPANSION JOINT PROFILE (E TYPE)

PVC profile with adhesive alkali resistant glass fiber mesh for formation of expansion joint on a level side (E type).

Packaging	Sales unit
Package (25 pcs X 2,5 m)	pcs (2,5m)



INNER CORNER EXPANSION JOINT PROFILE (V TYPE)

PVC profile with adhesive alkali resistant glass fiber mesh for formation of expansion joint on inner corners (V type).

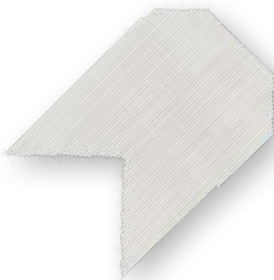
Packaging	Sales unit
Package (25 pcs X 2,5 m)	pcs (2,5m)



MESH FOR TRAPEZOID ARCHITRAVE BEADS

Special glass fiber mesh to form trapezoid-shaped architrave beads.

Dimensions	Packaging	Sales unit
30/20/17 mm	2 m	pcs (2 m)



DIAGONAL MESH TO REINFORCE STRUCTURAL OPENINGS

Trapezoid section alkali resistant mesh to reinforce corners of structural openings.

Packaging	Sales unit
30 cm X 50 cm	box (50 pcs)



CAPS VITEXTHERM EPS WHITE Ø65

Round section caps from expanded polystyrene to cover fixing plugs.

Dimensions

Sales unit

Ø 65

100 pcs



CAPS EPS GRAPHITE Ø65

Round section caps from graphite-based expanded polystyrene to cover fixing plugs.

Dimensions

Sales unit

Ø 65

100 pcs



CAPS MINERAL WOOL Ø65

Round section caps from mineral wool expanded polystyrene to cover fixing plugs.

Dimensions

Sales unit

Ø 65

100 pcs



PLASTIC MILLING CUTTER

Plastic milling tool to create recesses on insulating panels for placing mechanical strength anchors.

Packaging

1 pcs



METALLIC MILLING CUTTER

Metallic milling tool to create recesses on insulating panels for placing mechanical strength anchors.

Packaging

1 pcs

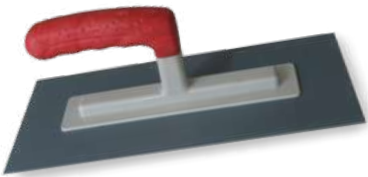


POLYSTYRENE SANDER

Metal sander suitable for thermal insulation panels.

Packaging

1 pcs



PLASTIC TROWEL

Plastic trowel for forming the final texture on **Granikot Acrylic** and **Granikot Silicone**.

Packaging

1 pcs



METAL TROWEL

INOX coating grinder trowel.

Packaging

1 pcs



POLYURETHANE GUN FOAM

Gun for the application of **GNK FOAM**.

Packaging

1 pcs



HAND-HELD POLYSTYRENE CUTTING MACHINE C-140

A powerful hand-held cutting machine for special polystyrene cuts. Perfect for thicknesses up to 140mm.

Packaging

1 pcs



POLYSTYRENE CUTTING MACHINE EUROKOMAX

Tool used for cutting polystyrene panels.

Length of cut: 1060mm

Output voltage 230Volt

Power: 111Watt, at low voltage 50/60 Hz

- ✓ **High precision with the ability to make a number of different cuts**
- ✓ **Adjustable cutting depth**

Packaging

1 pcs



ARCHITRAVE BEADS MOUNTING TOOL

Tool for applying coatings in architrave beads, in the **VitexTherm** External Thermal Insulation Composite System.

Packaging

1 pcs

SUSPENSION PARTS FOR LIGHT AND HEAVY WEIGHTS



SPIRAL ANCHOR FOR LIGHT WEIGHTS

Spiral anchor for suspension of light weights (up to 5kg) in the **VitexTherm** External Thermal Insulation Composite System.

Packaging

10 pcs



SOCKET MOUNTING ACCESSORY

Tubular polyamide accessory for socket mounting (socket inner diameter \varnothing 65 and outer diameter 105mm).

Packaging

1 pcs



SOCKET MOUNTING MILLINE CUTTER

Plastic milling tool to create recesses on insulating panels for placing the electric recessed sockets.

Packaging

1 pcs

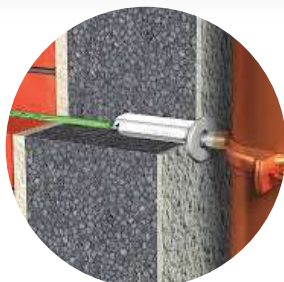


HEAVY WEIGHT CYLINDER

Polyethylene tube for suspension of heavy weights (to 40kg) in the **VitexTherm** External Thermal Insulation Composite System (\varnothing 90mm, length 540mm).

Packaging

1 pcs



In consultation with our technical department special pieces are available for the ex post placement of loads e.g. gutters, signs, luminaires, awnings etc.





- ✓ Economic solution
- ✓ Energy savings of up to 30%

MATERIAL	DESCRIPTION	CONSUMPTION/m ²
GNK 10G EASY	Adhesive Mortar	4,5 kg/m ²
VITEX THERM EPS 80 WHITE (5cm)	Expanded Polystyrene	1,0 m ² /m ²
WK-LTX 115	Plastic Anchor	5 pcs/m ²
GNK 20W EASY	Reinforcement Material	4,5 kg/m ²
VITEX THERM GLASS FIBER MESH	Glass fiber Mesh	1,10 m ² /m ²
GRANIKOT PRIMER	Primer	100 mL/m ²
GRANIKOT LINEA FLAT (1,0 mm)	Acrylic Plaster	2,0 kg/m ²



- ✓ High elasticity
- ✓ Energy savings of up to 40%
- ✓ Impact resistance
- ✓ Reinforced mechanical fastening

MATERIAL	DESCRIPTION	CONSUMPTION/m ²
GNK 10G	Adhesive Mortar	4,5 kg/m ²
VITEX THERM EPS 80 GRAPHITE PLUS (5cm)	Graphite - based Expanded Polystyrene	1,0 m ² /m ²
VITEX THERM PL 110	Plastic Anchor	5 pcs/m ²
GNK ELASTIC	Reinforcement Material	3 kg/m ²
VITEX THERM GLASS FIBER MESH	Glass fiber Mesh	1,10 m ² /m ²
GRANIKOT PRIMER	Primer	100 mL/m ²
GRANIKOT ACRYLIC FLAT W (1,0 mm)	Acrylic Plaster	2,0 kg/m ²



INDICATIVE VITEX THERM SOLUTIONS *



MATERIAL	DESCRIPTION	CONSUMPTION/m ²
GNK 10G	Adhesive Mortar	4,5 kg/m ²
VITEX THERM EPS 80 WHITE (7cm)	Expanded Polystyrene	1,0 m ² /m ²
WK-LTX 135	Plastic Anchor	5 pcs/m ²
GNK 20W	Reinforcement Material	4,5 kg/m ²
VITEX THERM GLASS FIBER MESH	Glass fiber Mesh	1,10 m ² /m ²
GRANIKOT PRIMER	Primer	100 mL/m ²
GRANIKOT ACRYLIC FLAT W (1,0 mm)	Acrylic Plaster	2,0 kg/m ²



MATERIAL	DESCRIPTION	CONSUMPTION/m ²
GNK FOAM	Adhesive Foam	110 mL/m ²
VITEX THERM EPS 80 WHITE (5cm)	Expanded Polystyrene	1,0 m ² /m ²
VITEX THERM PL 110	Plastic Anchor	5 pcs/m ²
GNK 20W	Reinforcement Material	4,5 kg/m ²
VITEX THERM GLASS FIBER MESH	Glass fiber Mesh	1,10 m ² /m ²
GRANIKOT PRIMER	Primer	100 mL/m ²
GRANIKOT ACRYLIC FLAT W (1,0 mm)	Acrylic Plaster	2,0 kg/m ²



- ✓ Non-combustible mineral wool with high fire resistance A1
- ✓ High level of sound insulation
- ✓ High breathability & waterproofing
- ✓ Energy savings of up to 30%
- ✓ Reinforced mechanical fastening

MATERIAL	DESCRIPTION	CONSUMPTION/m ²
GNK 10G	Adhesive Mortar	5 kg/m ²
VITEX THERM MINERAL WOOL (5cm)	Mineral Wool	1,0 m ² /m ²
VITEX THERM PL 110	Plastic Anchor	5 pcs/m ²
GNK 20W	Reinforcement Material	4,5 kg/m ²
VITEX THERM GLASS FIBER MESH	Glass fiber Mesh	1,10 m ² /m ²
GRANIKOT PRIMER	Primer	100 mL/m ²
GRANIKOT SILICONE FLAT W (1,0mm)	Acrylic Plaster	2,0 kg/m ²



- ✓ Energy savings of up to 44%
- ✓ High quality acrylic non-flammable plaster, with certified fire reaction A2-s1, d0
- ✓ Thermal resistance coefficient R>1,8

MATERIAL	DESCRIPTION	CONSUMPTION/m ²
GNK 10G	Adhesive Mortar	4,5 kg/ m ²
VITEX THERM EPS 80 WHITE (7cm)	Expanded Polystyrene	1,0 m ² / m ²
WK-LTX 135	Plastic Anchor	5 pcs/ m ²
GNK 20W	Reinforcement Material	4,5 kg/ m ²
VITEX THERM GLASS FIBER MESH	Glass fiber Mesh	1,1 m ² / m ²
GRANIKOT PRIMER	Primer	100 ml/ m ²
GRANIKOT FIRE RESISTANT FLAT W (1,0mm)	Non Combustible Plaster	2 kg/ m ²



ANTI-CRACK PROTECTION SYSTEM



- ✓ With inorganic GNK 20W
- ✓ Full shielding and restoration of surface facades
- ✓ Definitive solution

MATERIAL	DESCRIPTION	CONSUMPTION/m ²
GNK 20W	Reinforcement Material	4,5 kg/ m ²
VITEX THERM GLASS FIBER MESH	Glass fiber Mesh	1,1 m ² / m ²
GRANIKOT PRIMER	Primer	100 ml/ m ²
GRANIKOT ACRYLIC FLAT W (1,0mm)	Acrylic Plaster	2 kg/ m ²



- ✓ With organic mortar GNK Elastic
- ✓ Full shielding and restoration of surface facades
- ✓ Definitive solution
- ✓ High elasticity and impact resistance

MATERIAL	DESCRIPTION	CONSUMPTION/m ²
GNK ELASTIC	Reinforcement Material	3,0 kg/ m ²
VITEX THERM GLASS FIBER MESH	Glass fiber Mesh	1,1 m ² / m ²
GRANIKOT PRIMER	Primer	100 ml/ m ²
GRANIKOT ACRYLIC FLAT W (1,0mm)	Acrylic Plaster	2 kg/ m ²

External thermal
insulation at
Ammos Beach Resort
Hotel in Malia,
Heraklion, Crete
Surface area:
3.000 m²



External thermal
insulation at
Glyfada Riviera Hotel
in Glyfada, Athens.
Surface area:
2.000 m²



Upgrade of
energy efficiency
of public building,
Athens, Greece.
Surface area:
8.500 m²



External thermal
insulation
of private home,
Greece.
Surface area:
800 m²



Energy upgrade with External
insulation system with mineral
wool in a private school in Athens.

Surface:
800 m²



External thermal
insulation of
a hotel, Crete
island, Greece.
Surface area:
2.000 m²

Energy efficiency upgrade of a nursery school, Greece.
Surface area:
700 m²



External thermal insulation of private home, Greece.
Surface area:
650 m²



External thermal insulation of private home, Greece.
Surface area:
800 m²



Anti-crack protection in a hotel in Zakynthos.
Surface:
3.500 m²



External thermal insulation in the new unit intensive care of the Hospital "Sotiria".
Surface:
1.700m²



External thermal insulation in the hotel Metropole Urban Hotel in Heraklion, Crete.
Surface:
1.200 m²



External thermal insulation in a hotel in Kalamata.
Surface:
2.500m²



VITEX THERM

Thermal Insulation System

PRODUCT_CATALOGUE_VITEX THERM / 2023 / EN /

Technical Support

+30.210.5589.400

Monday - Friday, 09:00 - 15:00.
No orders

e-mail: vitextherm@vitex.gr

www.vitextherm.gr/en

