



## MAX PROTECTION SYSTEM

For exterior masonry with MAX durability apply the system:

### SURFACE PREPARATION:

FOR NEW SURFACES



ACRYLAN UNCO ECO

Ecological Silicone Acrylic Water-based primer

FOR RECOAT SURFACES



VITOSIN

Acrylic Insulating Primer, Solvent-Based

### SURFACE PAINTING:



ACRYLAN MAX

Ultra Durable Nano-Acrylic Paint

### COLOR SHADE SELECTION:



GLOBAL EXTERIOR

Fan deck with 160 most popular shades of exterior shades in Greece and worldwide, enhanced with special pigments for exterior HD-High Durability

## MAX RESILIENCE TO CLIMATE CHANGE

Acrylan Max has been assessed for the environmental footprint during paint surface life cycle and has ECO-EPD (Environmental Product Declaration)

MINIMUM carbon footprint in the life cycle  
MAX life cycle performance

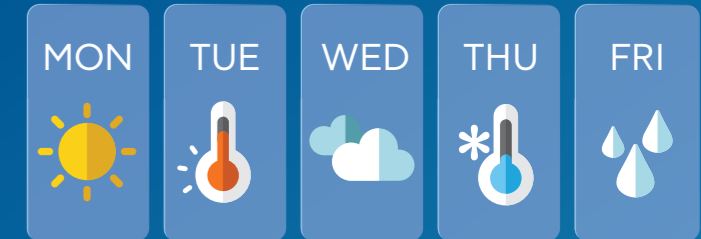


TECHNICAL SUPPORT  
**+30.210.5589.400**  
customer@vitex.gr/en



vitex.gr/en

## THE RIGHT WEATHER TO PAINT IS ANY WEATHER



vitex.gr/en



# ULTRA DURABLE NANO ACRYLIC PAINT FOR FLEXIBILITY IN THE APPLICATION AND RESISTANCE OVER TIME

Acrylan MAX offers superior performance, long lasting TECHNOLOGY durability as well brighter colors which look "fresher" and will not fade, ensuring that the building continues to look "clean and fresh" over time.

Its unique dirt pick-up resistance and anti soiling tendency "fights out" inorganic, organic (air pollution) and biological pollutants (e.g. fungi, algae) and thereby retains the initial beauty of the color.



Can be applied in all exterior surfaces of existing surfaces painted with Acrylic, silicone, elastomeric, silicate paints of plaster, brickwork, cement, stone of existing external thermal insulation systems

- Application from 5°C to 45°C for 50% RH
- 30-60 minutes before the appearance of rain or dew\* and recoat in 2 hours
- White and unlimited number of shades through **Vitex Coloring System**
- Up to 10 % with water
- 750mL, 3L, 10L
- 15-17m<sup>2</sup> for properly prepared surfaces

\*depending on the shade

## FOR THE APPLICATION METEO WORKS

The special composition of Acrylan MAX makes it so resistant to climate change and extreme weather phenomena, as the paint can be completed 30-60 minutes before the appearance of rain or dew depending on the shade and also to be recoated within the first 2 hours.



Delays in application due to extreme weather conditions are avoided and the painting season is extended.

Acrylan MAX can be applied even when air, surface and material temperature ranges from 5°C to 45°C for 50% RH.



## FOR RESISTANCE TRIBRID NANO TECHNOLOGY

combines all the benefits of the existing paint technologies silicate, acrylic, silicone in one!

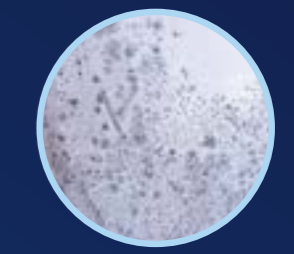


With the application of Acrylan MAX, a 3D "Nano protection grid" is established on the wall surface. This has strong inorganic character and offers maximum protection.

The effectiveness of Acrylan Max technology, was evaluated in real construction projects in Southeastern, Central Europe and the USA and in "accelerated weathering" conditions (UV radiation, temperature differences, high humidity), by giving solution at the common defect problems, such as:



**RAIN INDUCED SOILING EFFECT**  
MAX resistance against soiling and dirt pick up transferred by as well as rain



**FUNGI / ALGAE EFFECT**  
MAX resistance against multiplication of biological pollutants like fungi and algae, under high humidity conditions



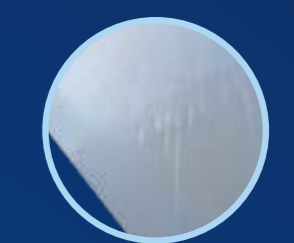
**ATMOSPHERIC POLLUTION EFFECT**  
MAX resistance against exhaust fumes and central heating pollutants



**"EFFLORESCENCE EFFECT"**  
MAX durability against salts contained in cement, brickwork and plaster who can be "transferred" to the exterior surface of the wall causing the phenomenon of efflorescence



**COLOR FADING EFFECT**  
MAX color retention and stability in exterior wall paints who are heavily "stressed" by adverse weather conditions (UV radiation, temperature changes and humidity)



**SNAIL TRAIL**  
MAX prevention of defects appearing on the paint surface on high humidity conditions and rain, like snail trail